



# **High Frequency Macroeconomic Forecasts: Second Quarter 2006**

**APEC Study Centre  
The University of Hong Kong**

**April 6, 2006**

**<http://www.hku.hk/apec/>**

# High Frequency Macroeconomic Forecasts

## APEC Study Center

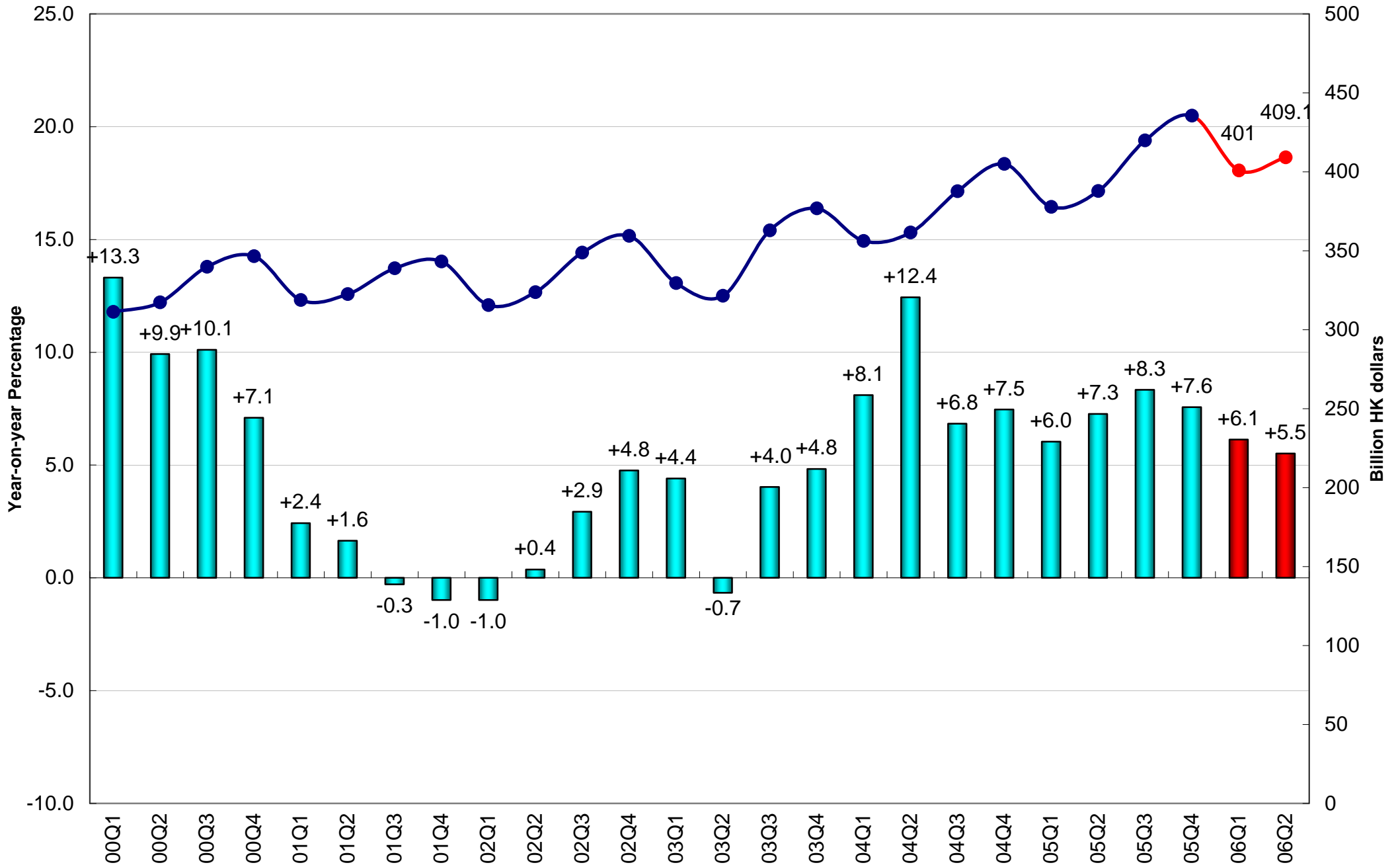
### The University of Hong Kong

Current Quarter Model Forecast  
(Percentage)

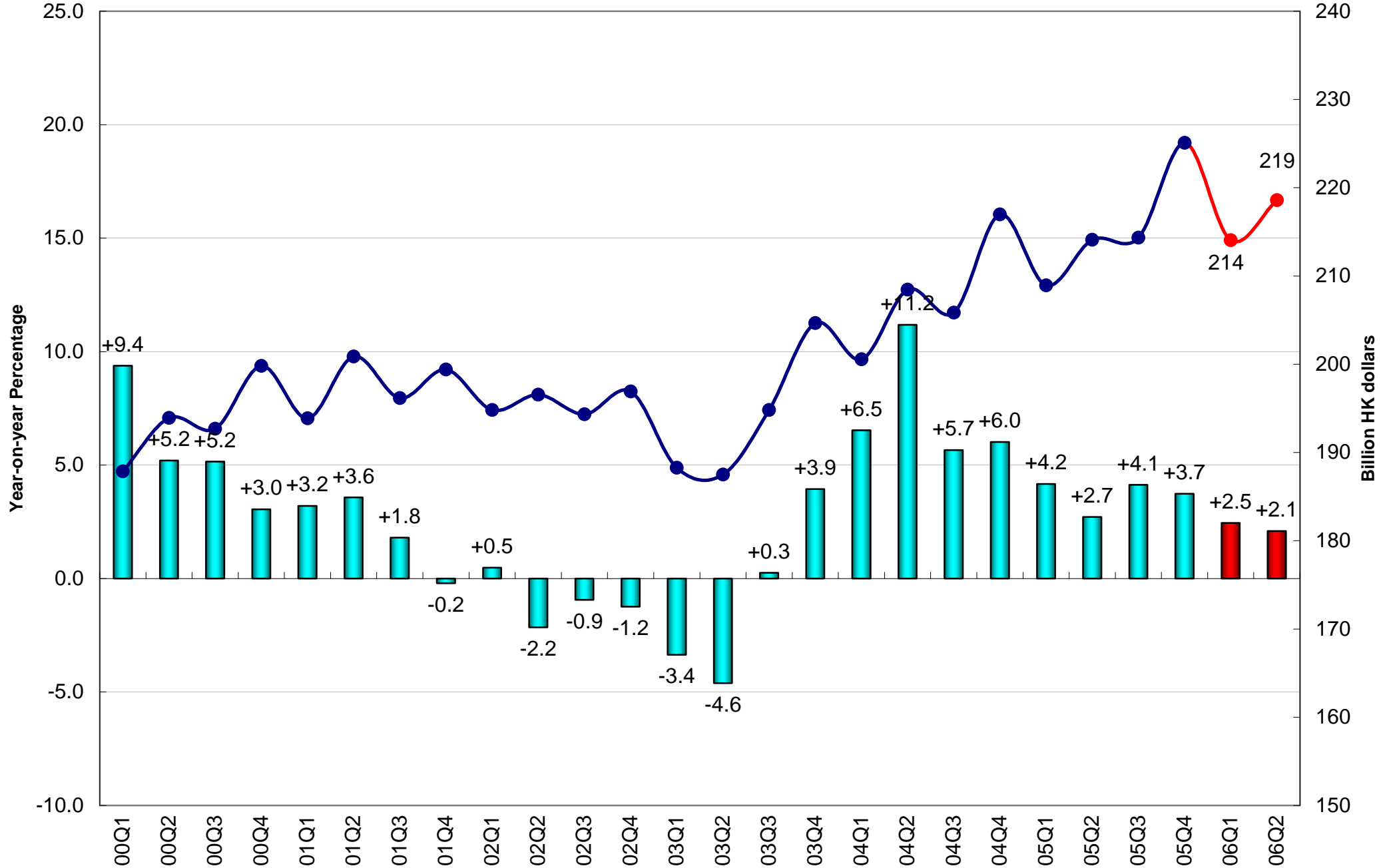
	2005					2006	
	Q1	Q2	Q3	Q4	Annual	Q1 (forecast)	Q2 (forecast)
Gross Domestic Product	6.8	7.3	8.3	7.6	7.5	6.1	5.5
Private Consumption Expenditure	5.1	2.7	4.1	3.7	3.9	2.5	2.1
Government Consumption Expenditure	-4.6	-2.3	-1.6	-3.4	-3.0	0.5	0.5
Total Export of Goods & Services	9.3	10.7	12.0	10.7	10.8	10.6	8.7
Total Import of Goods & Services	4.3	6.4	10.3	11.0	8.2	10.0	9.1
Gross Fixed Capital Formation	0.0	4.9	2.8	7.5	3.1	4.3	2.5
CPI (Composite) Inflation Rate	0.4	0.8	1.4	1.8	1.1	2.0	2.0
Unemployment Rate	6.1	5.7	5.5	5.3	5.7	5.2	5.1

Date of Forecast: March 29, 2006

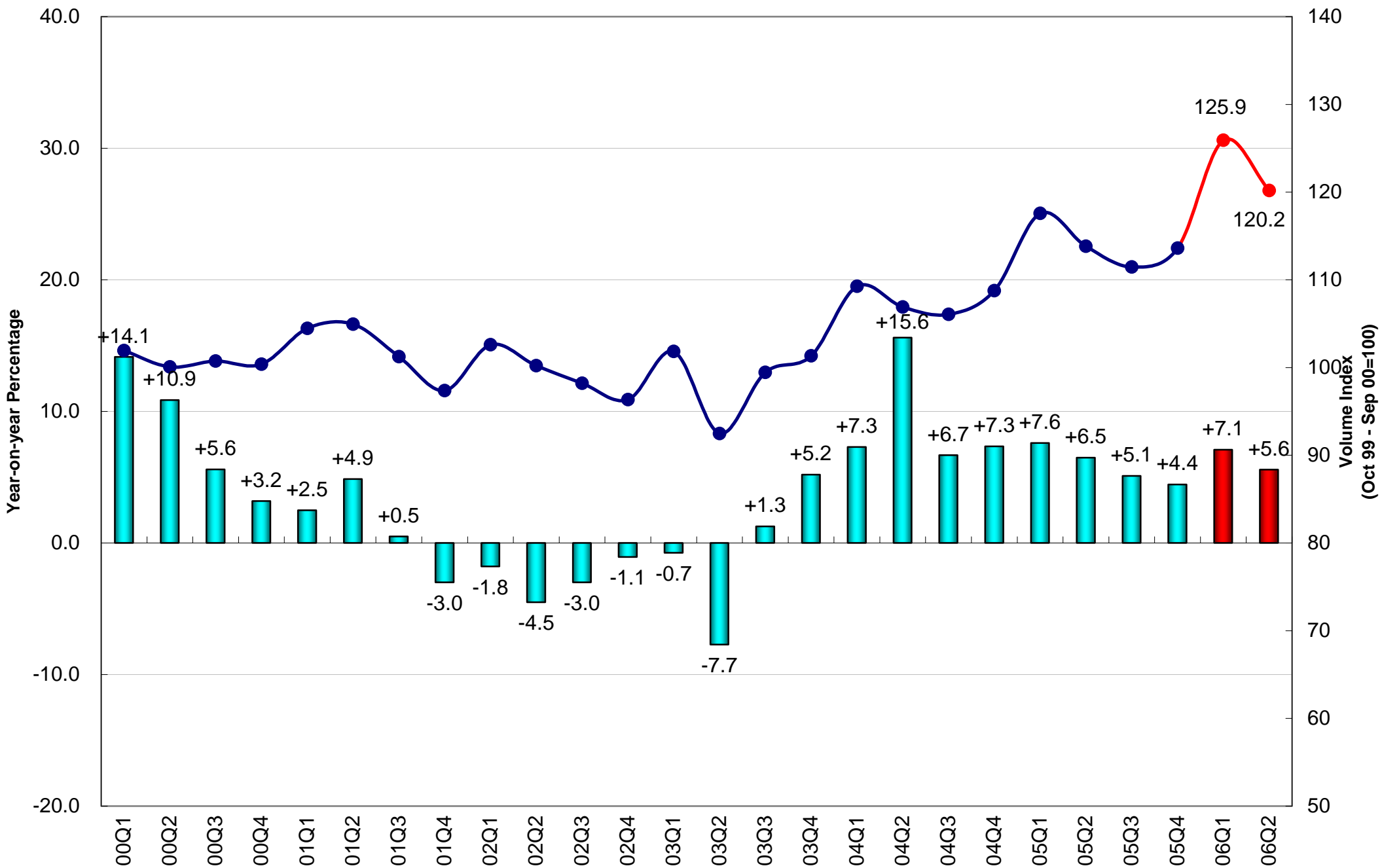
# Real Gross Domestic Product (2000 Prices)



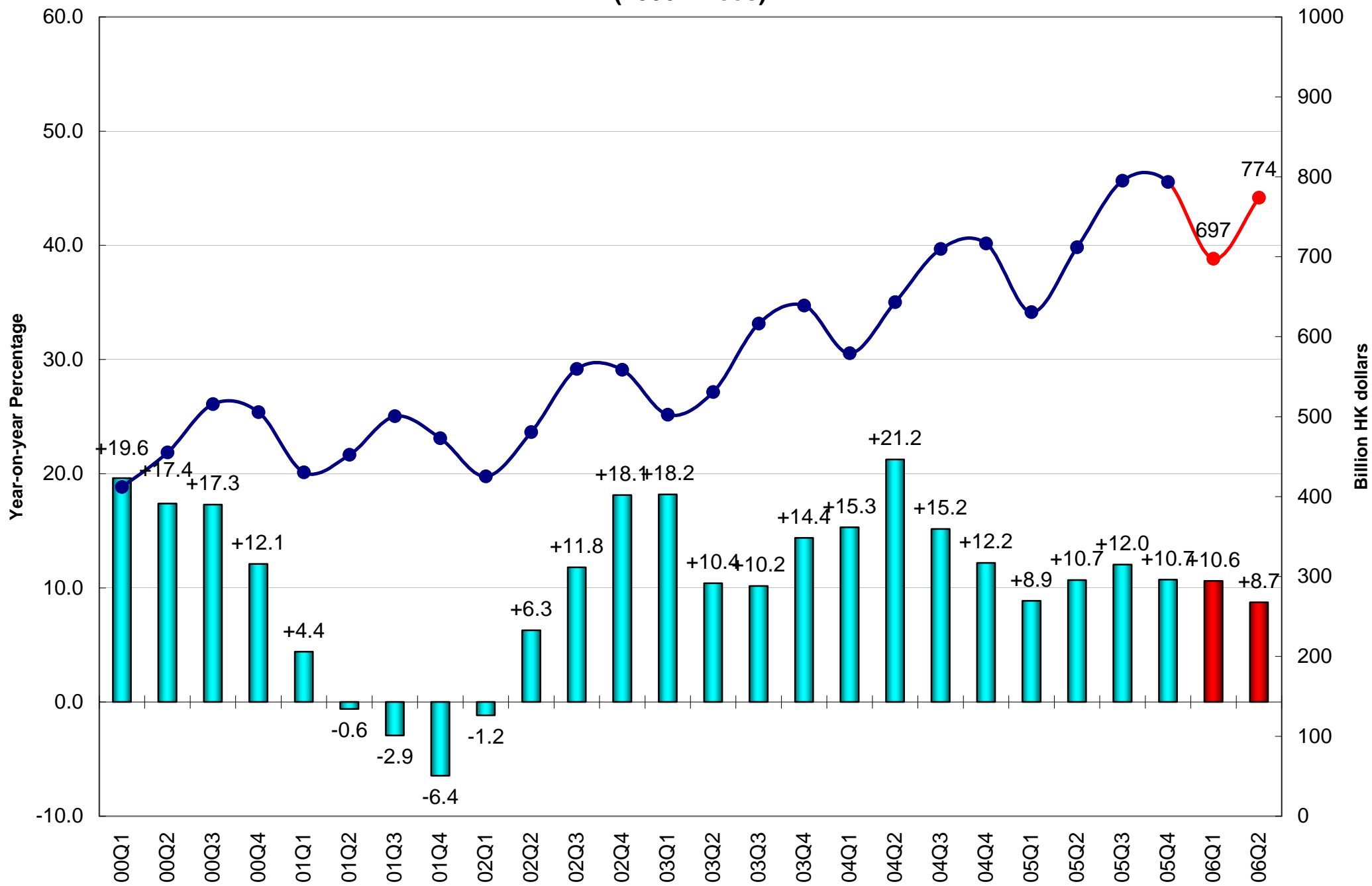
## Private Consumption Expenditure (2000 Prices)



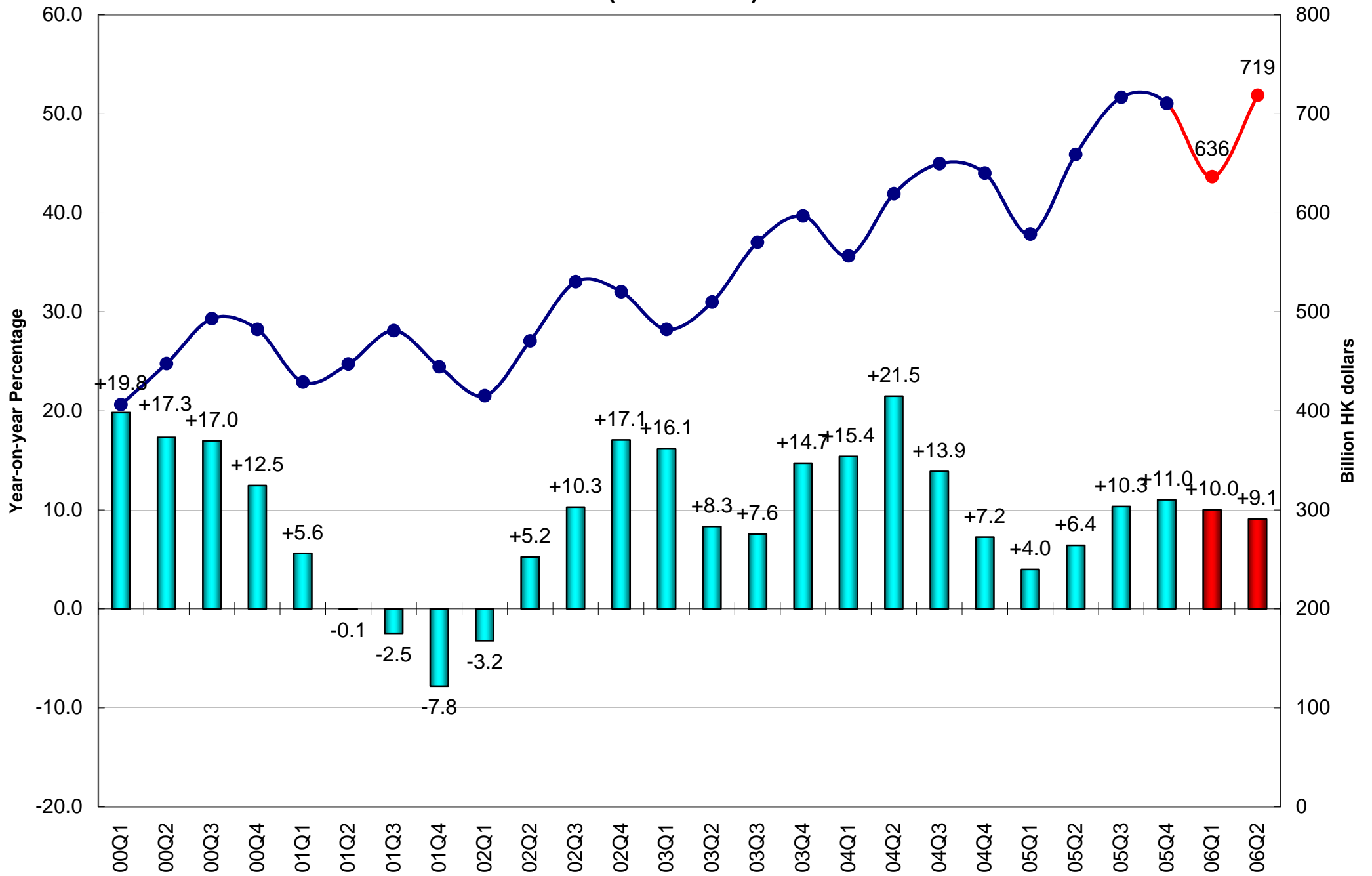
# Retail Sales Volume



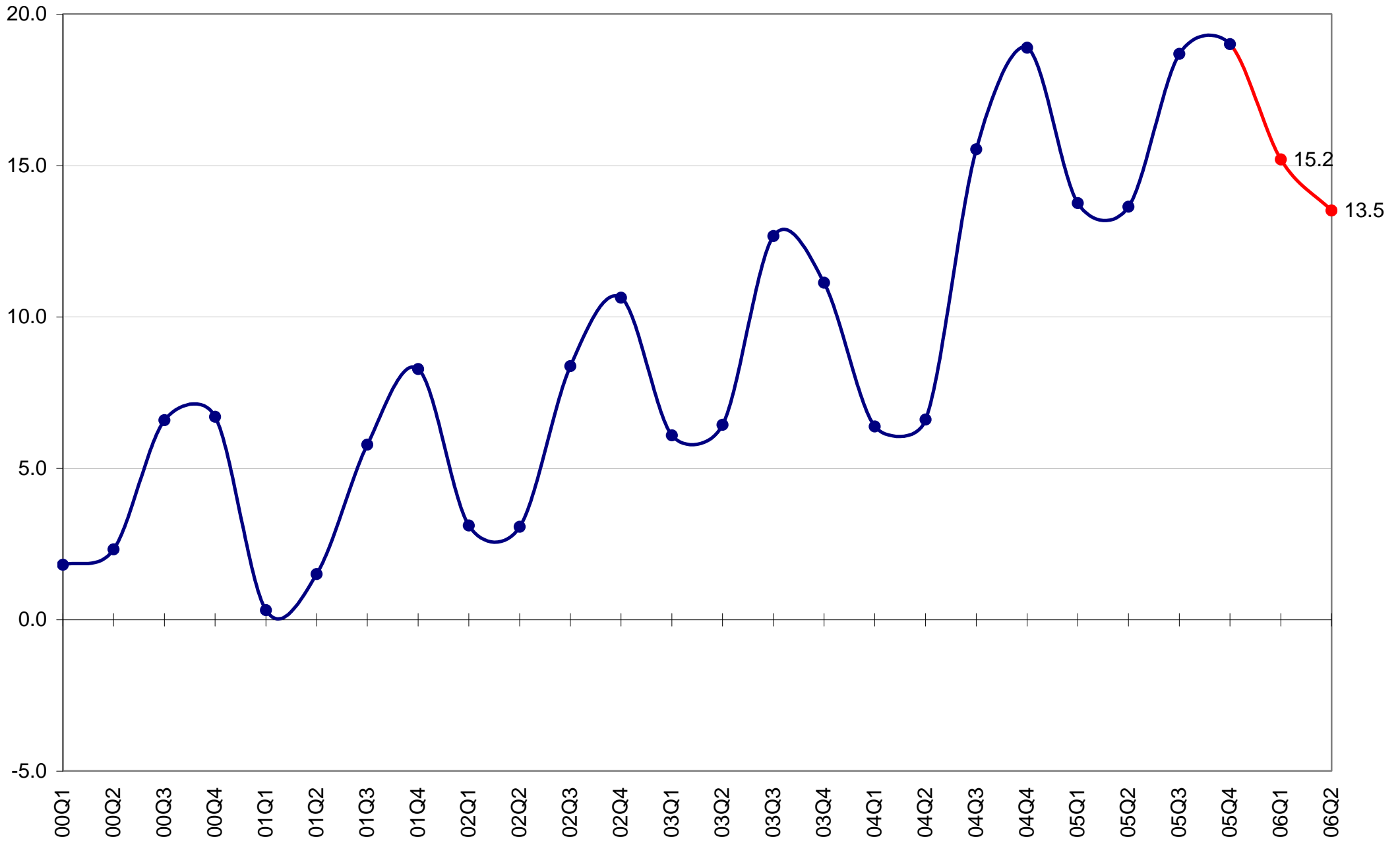
# Total Export of Goods & Services (2000 Prices)



## Total Import of Goods & Services (2000 Prices)

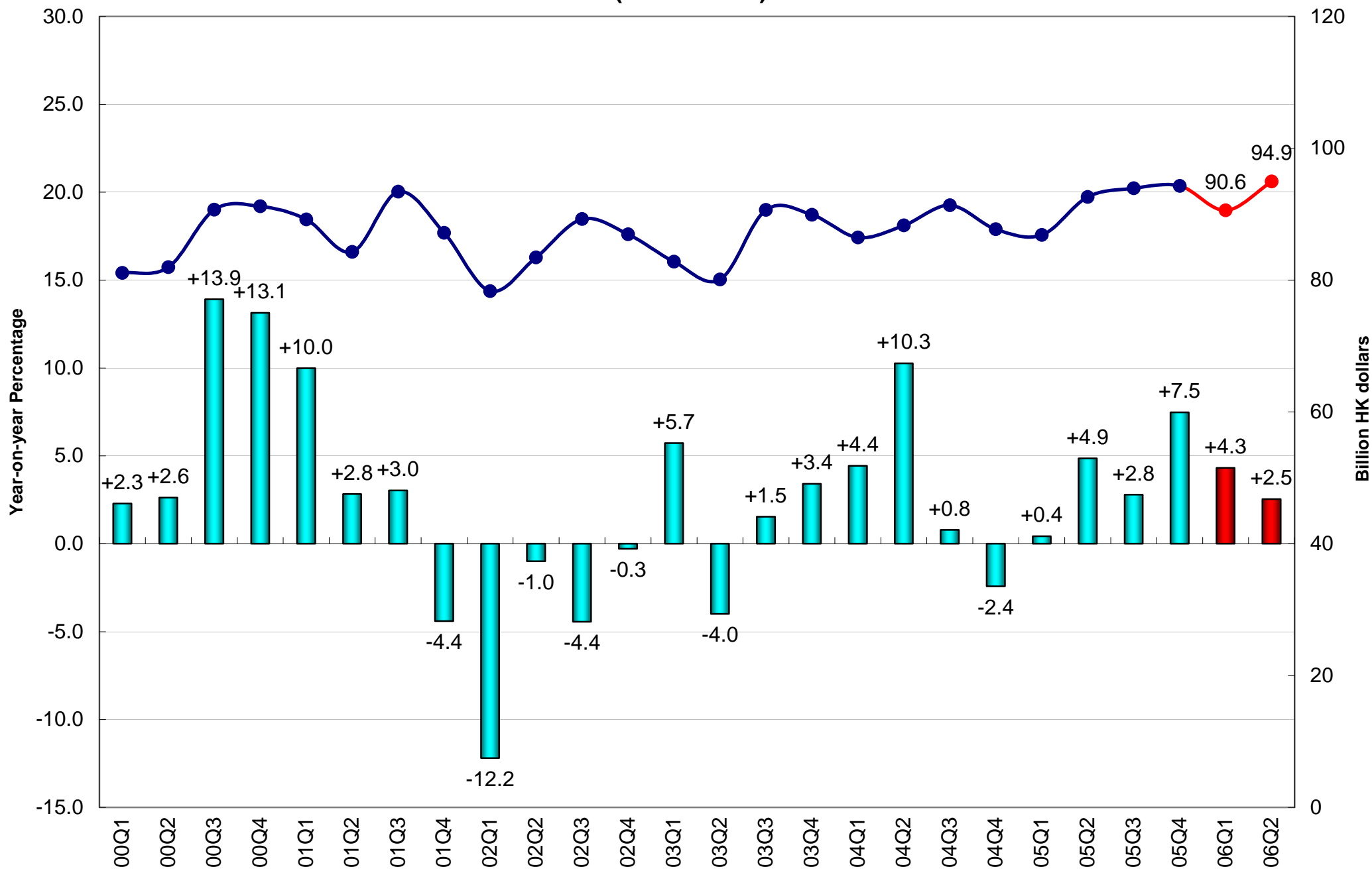


# External Trade Balance of Goods and Services (Percentage of GDP, 2000 HK Dollars)

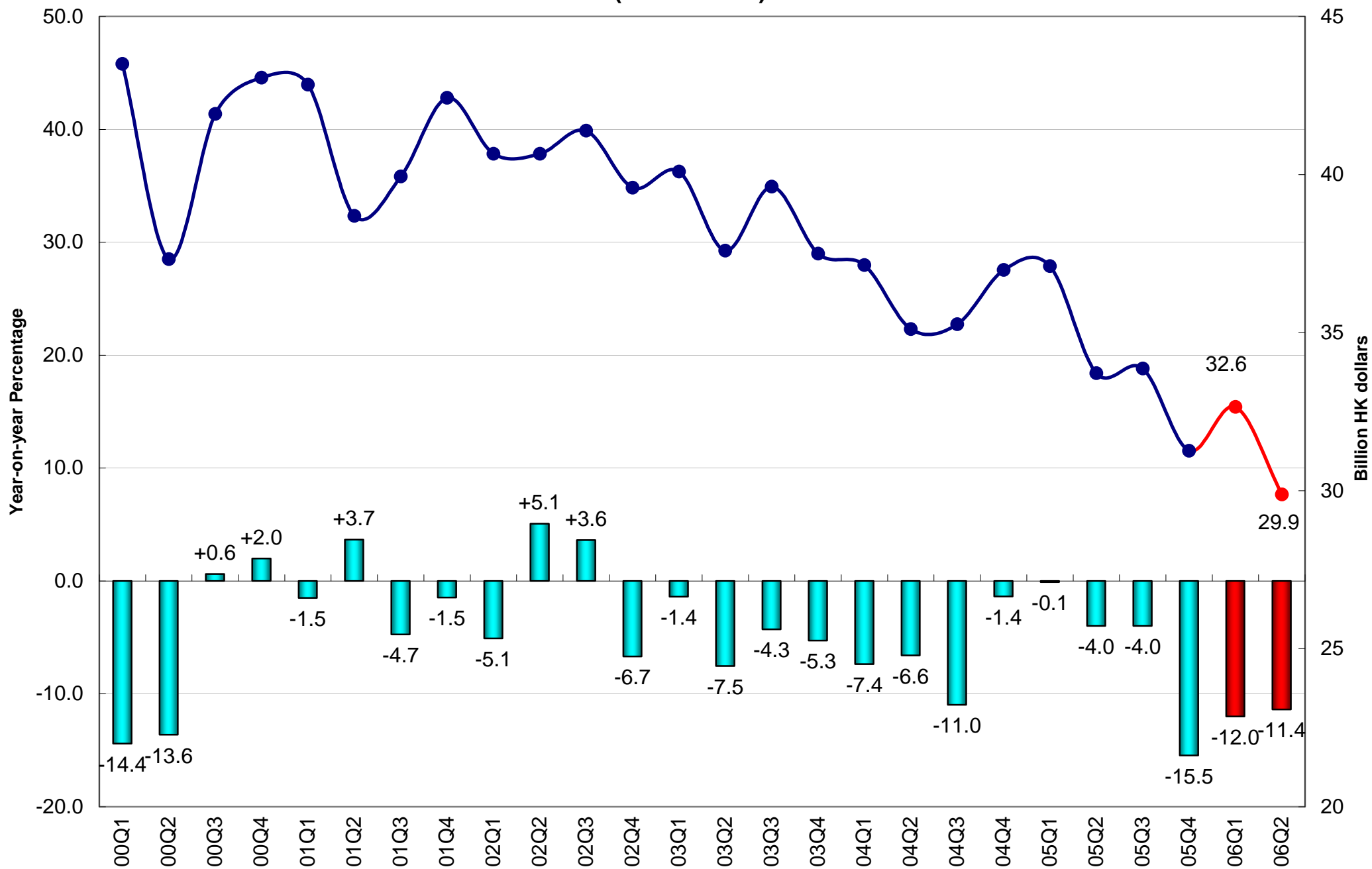




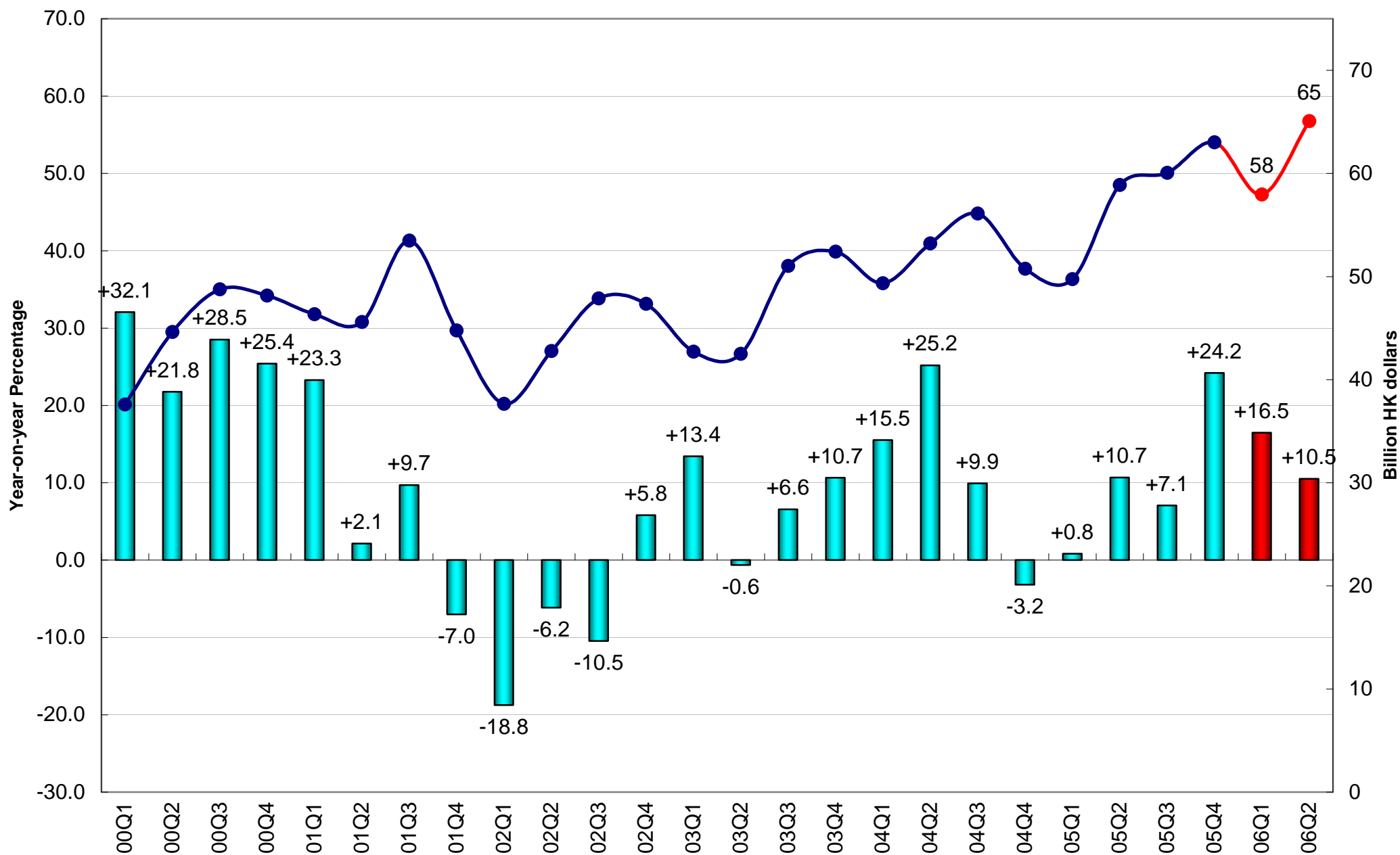
## Gross Domestic Fixed Capital Formation (2000 Prices)



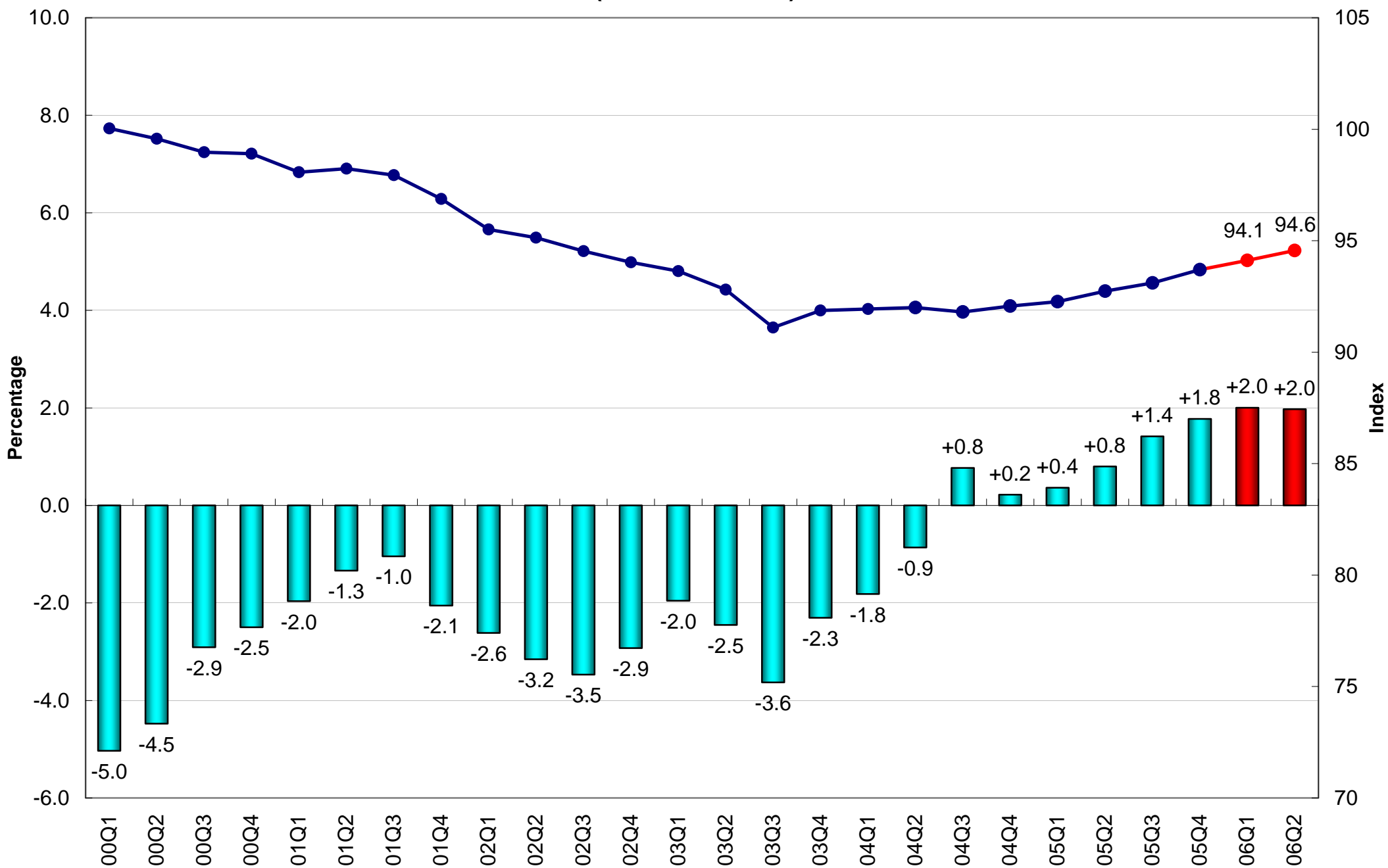
## Investment in Land and Constuction (2000 Prices)



## Investment in Machinery, Equipment & Computer Software (2000 Prices)

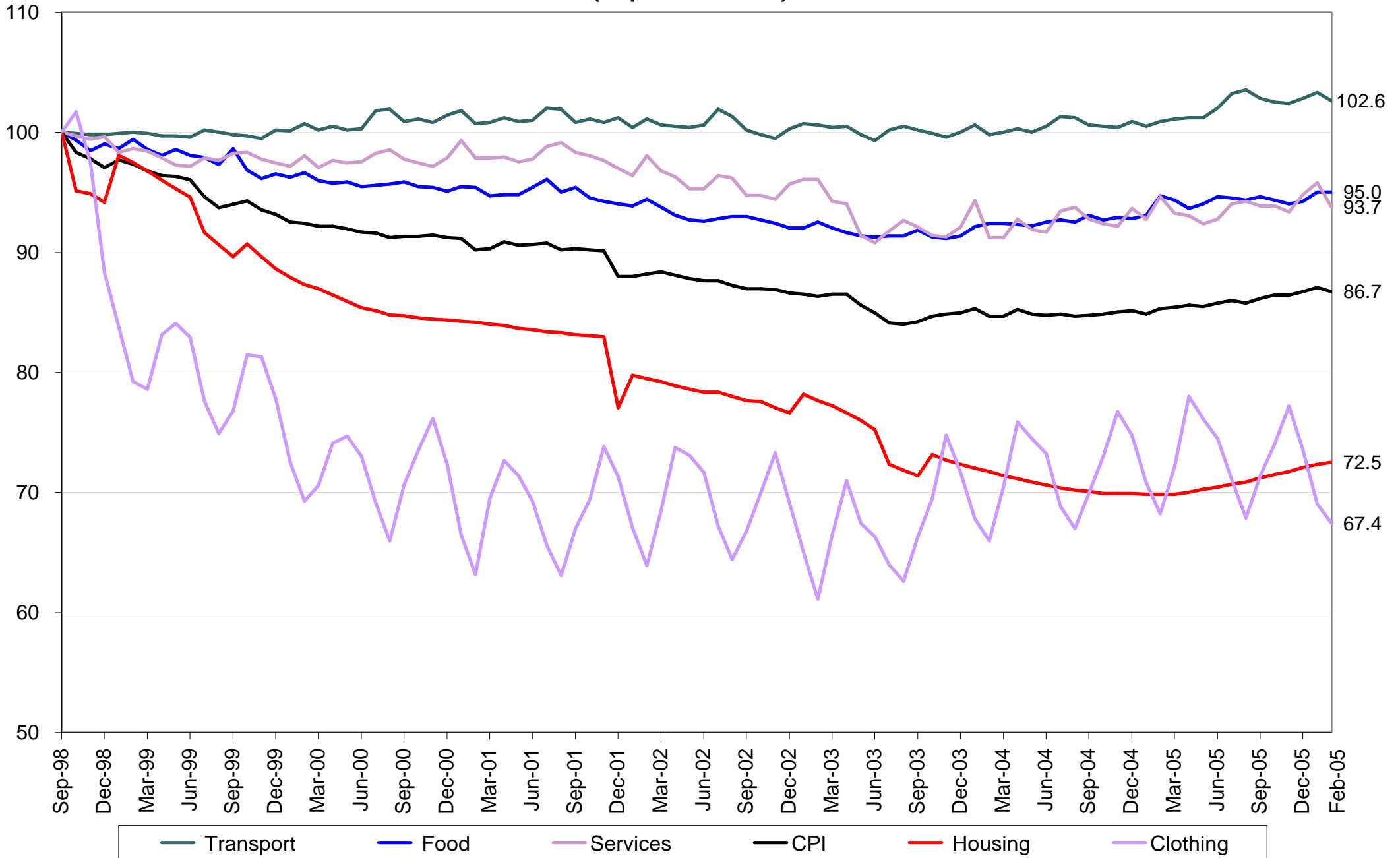


# Consumer Price Index (10/99-09/00=100)

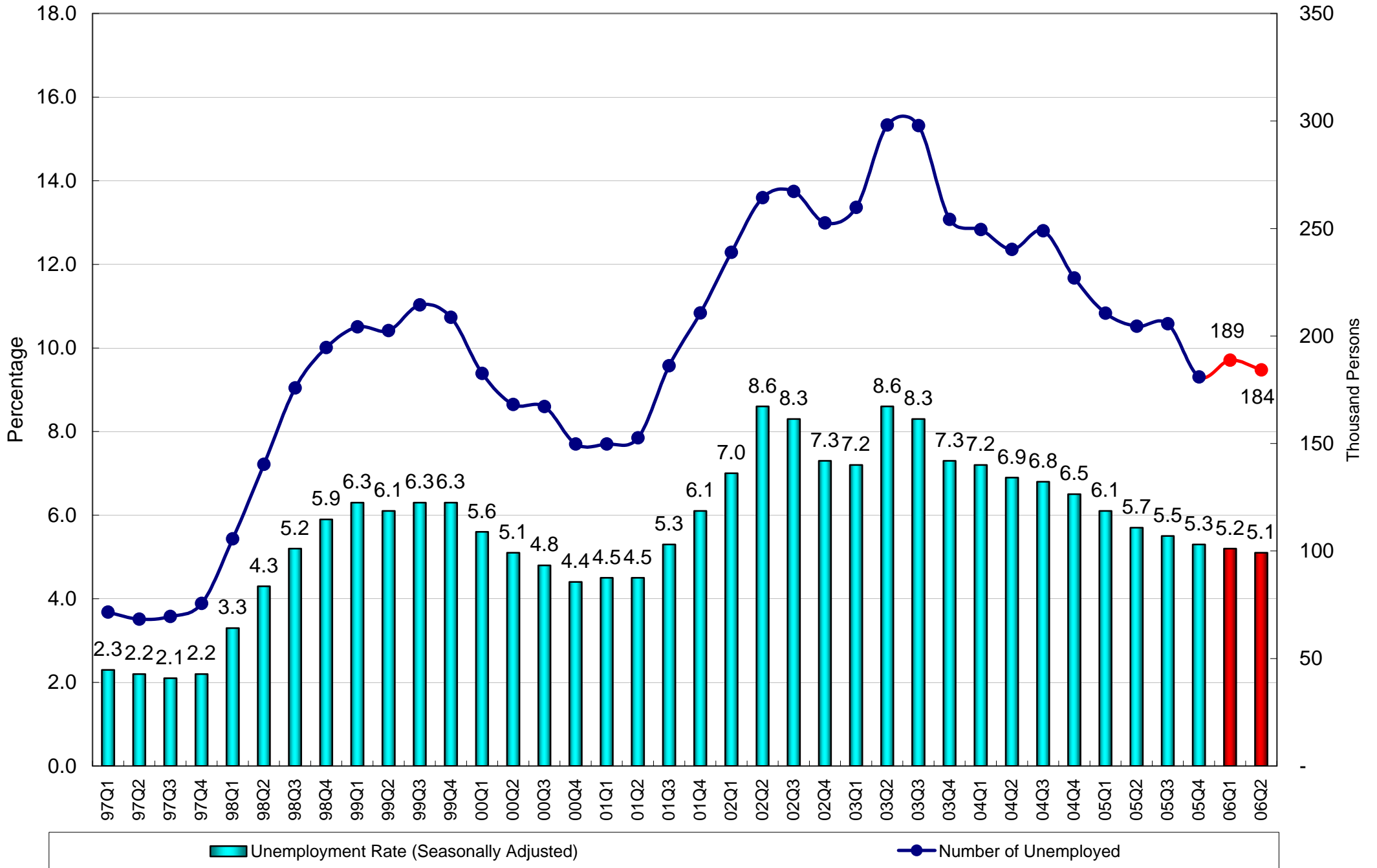


# Composite Consumer Price Index

(Sept 1998 = 100)



# Unemployment



## Workers Vs Jobs (in millions)

